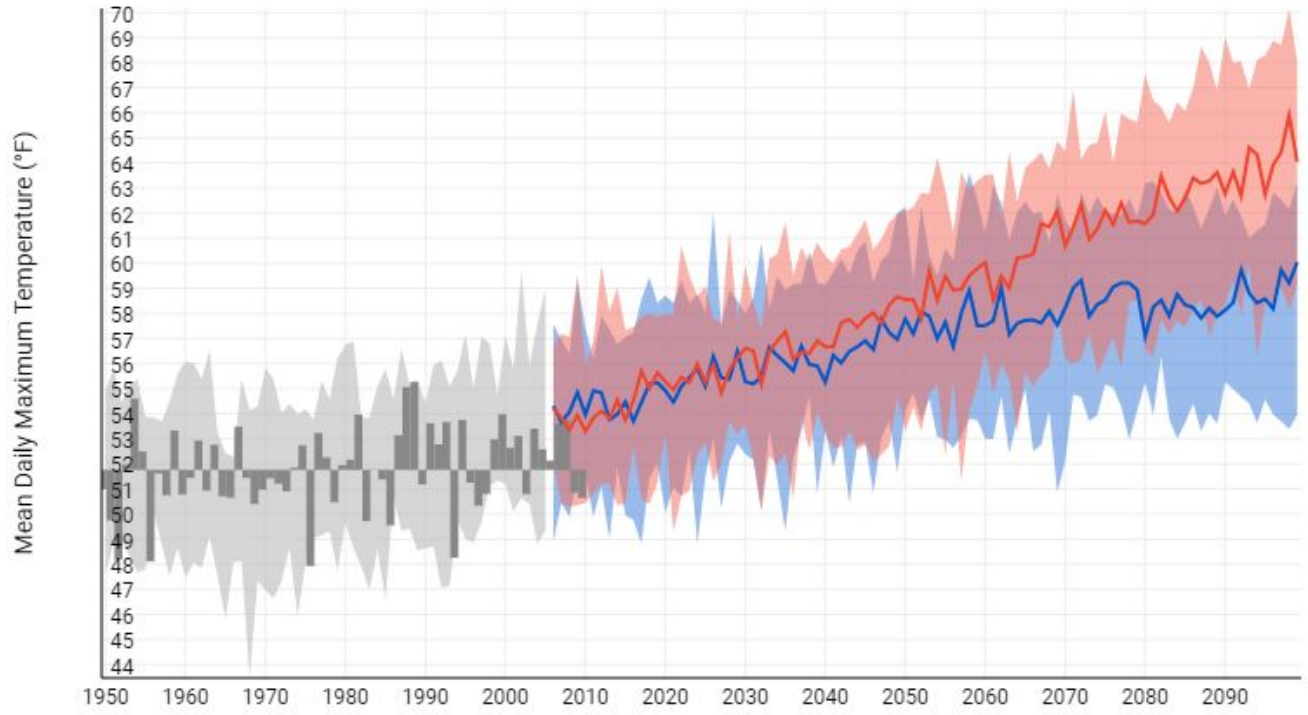
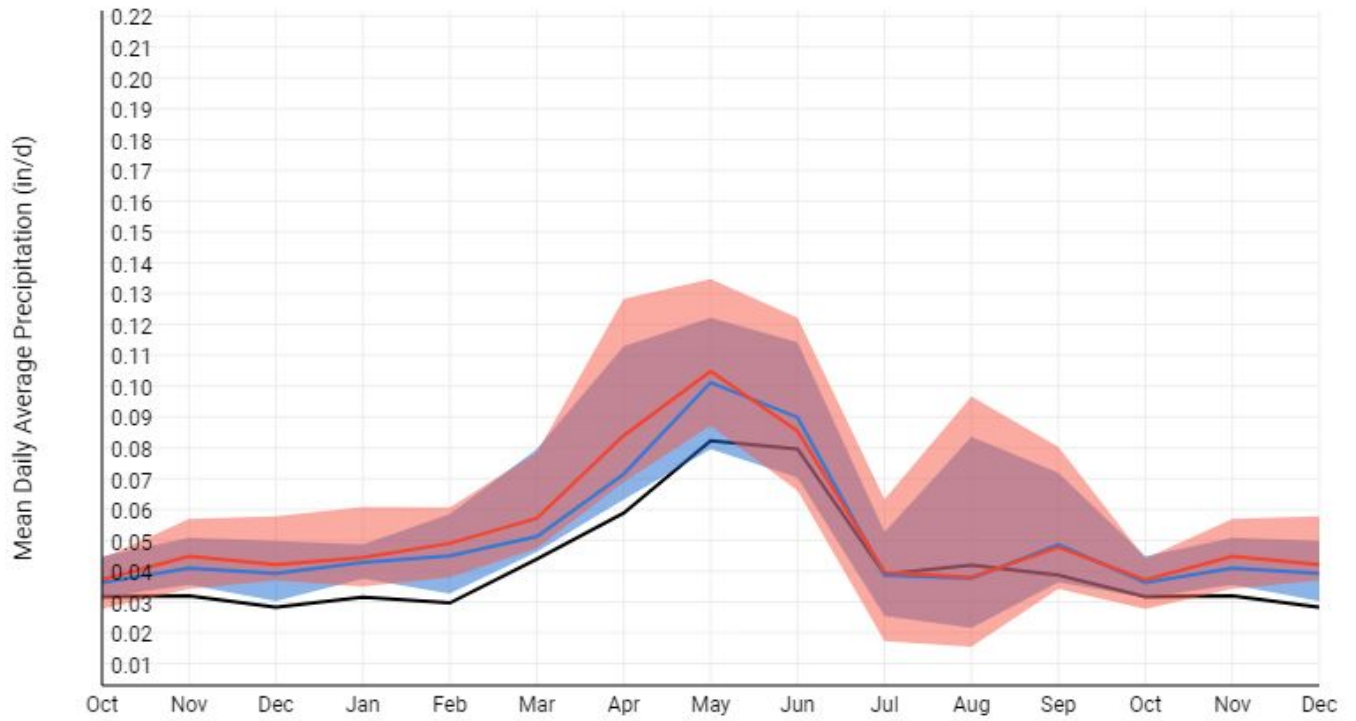
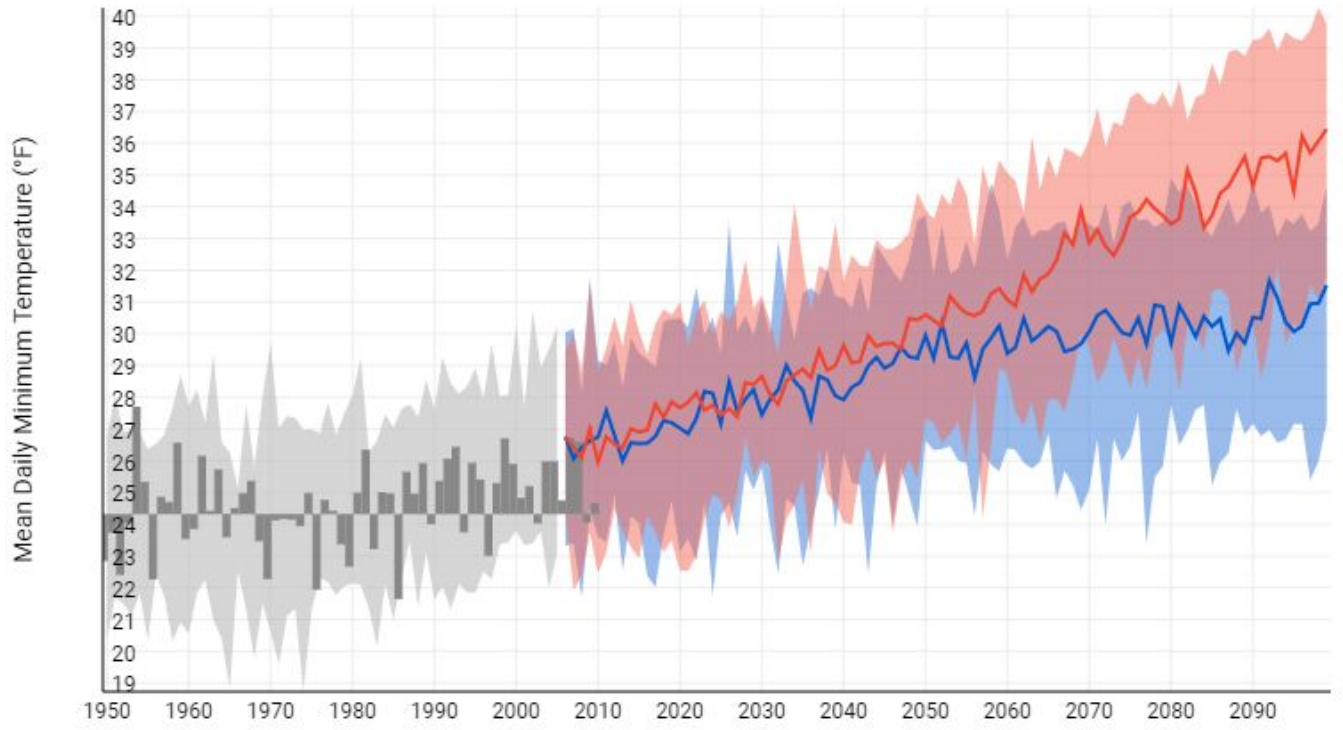


Jefferson Watershed Characteristics- Wiki Watershed		
Soil infiltration Type	Area (km2)	Coverage (%)
A - High Infiltration	604.36	18
A/D - High/Very Slow Infiltration	0	0
B - Moderate Infiltration	1,569.63	46.8
B/D - Medium/Very Slow Infiltration	13.2	0.4
C - Slow Infiltration	481.24	14.4
C/D - Medium/Very Slow Infiltration	29.13	0.9
D - Very Slow Infiltration	655.85	19.6
Land Cover Type	Area (km2)	Coverage (%)
Open Water	11.85	0.4
Perennial Ice/Snow	0	0
Developed, Open Space	60.5	1.8
Developed, Low Intensity	20.56	0.6
Developed, Medium Intensity	1.59	0
Developed, High Intensity	0.15	0
Barren Land (Rock/Sand/Clay)	5.52	0.2
Deciduous Forest	0.75	0
Evergreen Forest	989.27	29.5
Mixed Forest	1.5	0
Shrub/Scrub	354.51	10.6
Grassland/Herbaceous	1,551.50	46.3
Pasture/Hay	226.54	6.8
Cultivated Crops	87.32	2.6
Woody Wetlands	37.67	1.1
Emergent Herbaceous Wetlands	2.54	0.1

NOAA Climate Resilience Toolkit data and projection examples for Jefferson County::





Examples of available long-term NRCS Snotel Data and USGS Stream Gage Data:

